

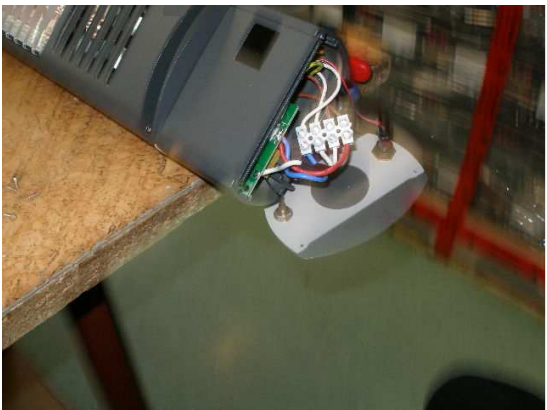
INSTRUCTIONS FOR THE REMOVAL AND INSTALLATION OF A SPARE BT2T BOARD for TERM2000 BLUETOOTH



1. Remove the 4 screws in the side element



2. Carefully open the page element



3. Remove the luster terminal



4. Unscrew the wires of the BT-board

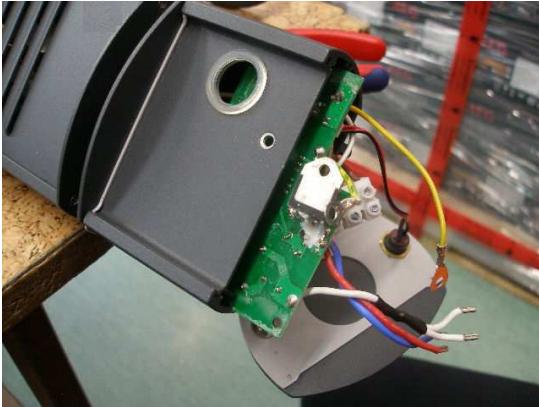


5. Carefully remove the plate with glass



6. Remove the Triac (Symistor) screw

INSTRUCTIONS FOR THE REMOVAL AND INSTALLATION OF A SPARE BT2T BOARD for TERM2000 BLUETOOTH



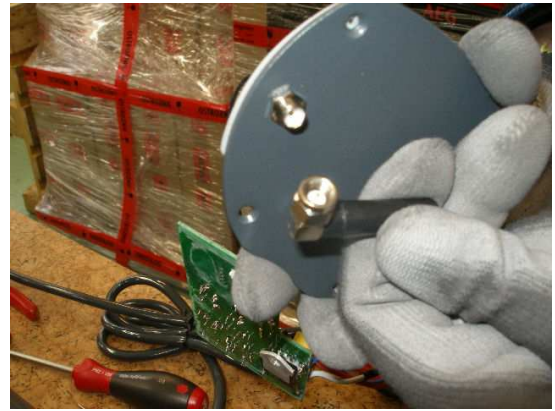
7. Remove the control plate from the BT board



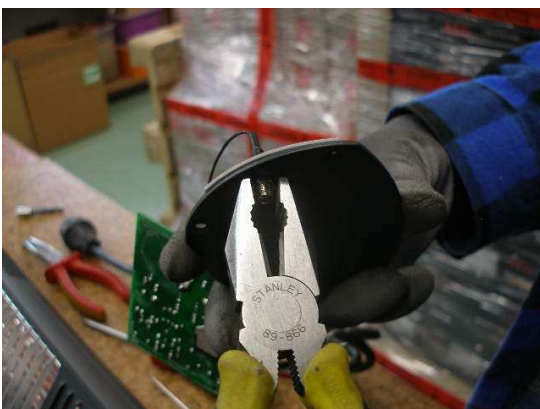
8. Unscrew the breaker nut



9. Disconnect the antenna connector of the
BT printed circuit board



10. Remove the antenna



11. Unscrew the antenna nut



12. Replace the luster terminal

PLEASE REASSEMBLE THE NEW BT CIRCUIT BOARD IN REVERSE ORDER.